

JOIN NEDRA

Simply fill in the form and select the appropriate Membership. Send your check or money order made payable to "NEDRA" to the following address or join from our website at www.nedra.com.

NEDRA Membership Director
10121 Marmot Ct
Anchorage, AK 99515

Name _____

Address _____ Apt _____

City _____ State _____

Zip _____ Phone _____

Email _____

Do you have a vehicle to race? _____

Yearly Membership \$35.00 The yearly membership provides you with the NEDRA newsletter, the NEDRA Rulebook and the opportunity to set NEDRA World Records. Both the owner of the vehicle and the driver of the vehicle must be NEDRA members in order to set a new NEDRA record.

Lifetime Membership \$200.00 The lifetime membership is a one time fee for as long as you live, or wish to be a member of NEDRA. Included in your lifetime membership is a NEDRA rulebook, the NEDRA newsletter and the opportunity to set NEDRA World Records.

Corporate Membership \$500.00 Your corporate membership includes a NEDRA rulebook, the NEDRA newsletter, booth space at NEDRA sanctioned events, plus complimentary advertising in the NEDRA rulebook, NEDRA newsletter, links on the NEDRA site to your corporate site or e-mail, and NEDRA sanctioned events. Corporate membership is good for a period of two years. The membership fee may be paid in cash or in equipment valued at \$500. Alternately, corporations may wish to sponsor a particular NEDRA sanctioned event instead of becoming a corporate member.

Educational Membership - Students \$35.00 Students working with an instructor (or part of the race team) are eligible for reduced educational membership fees. For racing, the entrance fee is \$10/car.

Educational Membership - Instructors \$5.00 To qualify for this membership, the instructor must have a regular \$35 annual (or \$200 lifetime) membership and students will receive yearly memberships for \$5 each as long as they are part of the race "team" (or taking a class from the instructor). For racing, the entrance fee is \$10/car.

NEDRA SPONSORS

All-Trax
www.alltraxinc.com

Cafe Electric
www.cafeelectric.com

Chris Paine
www.whokilledtheelectriccar.com

Environmental Transportation Options
www.etoptions.org

EV Parts
www.evparts.com

Hi-Torque Electric
www.hitorqueelectric.com

IOTA
www.iotaengineering.com

KTA Services
www.kta-ev.com

Left Coast Conversions
www.leftcoastconversions.com

Manzanita Micro
www.manzanitamicro.com

Megawatt Motorworks
www.megawattmotorworks.com

Plasma Boy Racing
www.plasmaboyracing.com

QuickCable
www.quickcable.com

SEVO
www.suncoast.net

Suck Amps EV Racing
www.suckamps.com

Thunderstruck Motors
www.thunderstruck-ev.com

EV Consulting Inc.
www.evconsultinginc.com

National Electric Drag Racing Association
10121 Marmot Ct
Anchorage, AK 99515
info@nedra.com

WORLD CLASS ELECTRIC DRAG RACING



The National Electric Drag Racing Association is a coalition of drag racing fans, electric drag racing vehicle owners and drivers, EV parts suppliers, EV manufacturers and other environmentally concerned companies and individuals. Working together as a group, we put excitement into electric vehicle drag racing.

 **NEDRA**
National Electric Drag Racing Association

www.nedra.com

ABOUT NEDRA

The National Electric Drag Racing Association (NEDRA) exists to increase public awareness of electric vehicle (EV) performance and to encourage through competition, advances in electric vehicle technology. NEDRA achieves this by organizing and sanctioning safe, silent and exciting electric vehicle drag racing events.



NEDRA is a coalition of drag racing fans, electric drag racing vehicle owners and drivers, individuals interested in promoting the sport of EV drag racing, EV parts suppliers, EV manufacturers and other environmentally concerned companies and individuals. Working together as a group, we put excitement into electric vehicle drag racing.

John Wayland's White Zombie.
11.466 seconds at 114.08 mph.



Bill Dube's KillaCycle.
7.890 seconds at 167.99 mph.

NEDRA was formed in 1996 by a group of hardcore amp heads who were out to prove that electric vehicles were more than glorified golf carts. They formed a set of rules which were later adopted by the NHRA. As the sport continued to grow the NHRA adopted rules for electric Jr. Dragsters. Today the sport continues to gain momentum as new vehicles are being built and raced each year. Visit our website at www.nedra.com.

NEDRA was formed in 1996 by a group of hardcore amp heads who were out to prove that electric vehicles were more than glorified golf carts. They formed a set of rules which were later adopted by the NHRA. As the sport continued to grow the NHRA adopted rules for electric Jr. Dragsters. Today the sport continues to gain momentum as new vehicles are being built and raced each year. Visit our website at www.nedra.com.



Lawless Industries Orange Juice.
10.8 seconds at 119.5 mph.

RACING EVENTS

To showcase the sport of electric drag racing NEDRA sanctions several races each year at NHRA tracks across the US. Some of our popular events include the *Battery Beach Burnout* in Florida, the *Kick Gas Festival* in San Diego, the *Power of DC* in Maryland, the *Wayland Invitational* in Oregon, *Wicked Watts* in Las Vegas and the *NEDRA Nationals*. Even with this many events some members cannot get enough and race on the weekends at area *Test and Tunes* and *Gambler* events.



Dennis Berube's Current Eliminator.
7.956 seconds at 159.85 mph.

Courtesy of DragRaceUSA.com

CLASSES AND RECORDS

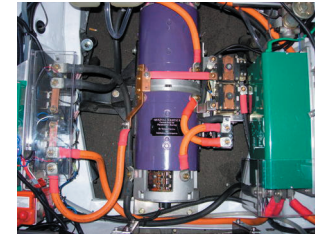
NEDRA vehicles are categorized by Class and Voltage. Classes are determined by the extent of the vehicle's modification from daily drivers such as simple *Street Conversions (SC)* and *Modified Conversions (MC)* to extreme racers such as electric funny cars in the *Extreme Street (XS)* class. Voltage Divisions range from 24 volts to over 348 volts and are represented by letters A through J. For example a *Street Conversion* running at 144 volts would be categorized as *SC/E*.



Roderick Wilde's Maniac Mazda.
12.07 seconds at 110.13 mph.

Records are achieved by running the best speed and time in your respective class. Records can be obtained at sanctioned NEDRA events or at NHRA events with two timeslips. Visit our website for more information.

PUSHING TECHNOLOGY TO THE LIMITS



Siamese-8 motor built by Jim Husted and Green Zilla built by Otmar Obenhoech under the hood of the White Zombie.

As NEDRA co-founder John Wayland says, "We blow things up so you don't have to." We push our technology to the extreme limits and a lot of that ingenuity is created by NEDRA members including Otmar Obenhoech who designs and

builds the high-amp Zilla motor controllers practically all record breaking NEDRA members run in their vehicles. Delivering that power to the rubber is the result of "Motor Maniacs" Jim Husted and Dennis Berube who build and blueprint motors that can handle hundreds of amps thrown at them. And feeding all that voltage to the batteries is the result of Rich Rudman who builds the PFC based high-amp chargers most racers use at the track today.

NEDRA IN THE NEWS

Although our vehicles are virtually silent NEDRA has been making noise in the media. Over the years NEDRA has been featured in *Car and Driver*, *Hot Rod*, *Make*, and *Wired*. The news media has also taken notice including the *Wall Street Journal*, *NBC*, *CBS*, *Fox* as well as local papers.



Courtesy of Milwaukee Tools

The *Discovery Channel*, *Science Channel*, *Planet*

Green and *Speed Channel* has featured NEDRA members, their vehicles and events in several productions. *Monster Garage* featured the talents of Rich Rudman and Shawn Lawless as they joined Jessie's crew to convert a 1962 Chevy Bel Air to run on over 384 Milwaukee V28™ 28-volt lithium-ion batteries.

NEDRA members appear on *Monster Garage* to convert a 1962 Chevy Bel Air to electric.